



# COLUMBIA GRINDING INC.

THE  
FLATWORK  
SPECIALISTS



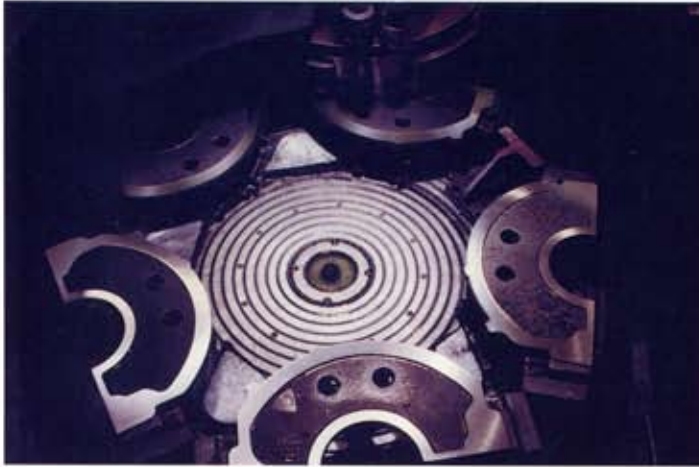
QUALITY  
COST EFFECTIVE  
GRINDING SERVICES

- BLANCHARD
- LAPPING
- DOUBLE DISC
- SURFACE
- REFORM



# From One Piece to Large Production Runs

## Columbia Grinding's Quality Services Save Time



Columbia's 20 years of grinding experience is at your disposal. We carry an extensive inventory of abrasives to assure that our grinding specialists will have the right abrasive to accommodate most any job. Materials such as steel, cast iron, brass, bronze, tool steels, stainless steel, power metal, plastics, aluminum, etc. are all in a day's work. Fast "accurate" turn-around time, that will fit into your production schedule is our trademark. Computers have aided us both in production as well as quality control since the early 1980's making job entry and/or changes quick and easy.



### BLANCHARD SERVICES

For larger components, Columbia offers you a bank of blanchard grinders with these capacities.

- Tables up to 60" / swing of 72" on pieces 32" high
- Tolerances as low as  $\pm .001"$
- Flatness and Parallelism  $.001"$
- Finishes to 10 RMS
- Roughing for subsequent finishing operations

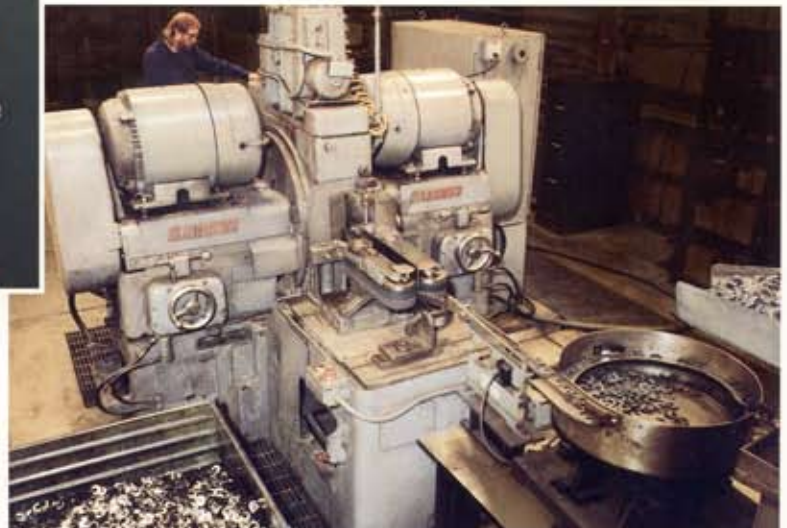
### REFORM GRINDING

For your long work, this machine can accommodate a piece 12" high by 36" wide by 210" long. With its 150 HP motor, it can remove stock with consistent accuracy over long lengths.



### DOUBLE DISC GRINDING

For higher volume work you cannot match our Double Disc feed thru grinders. These machines can also handle smaller orders where parallelism and flatness are critical.



This is one of the Double Disc units that Columbia will use to fill your need for high volume work on parts from  $.050"$  to 2" in thickness and from  $3/8"$  up to 9" in diameter. This one is equipped with a state-of-the-art variable speed motor control to give us increased job shop versatility.

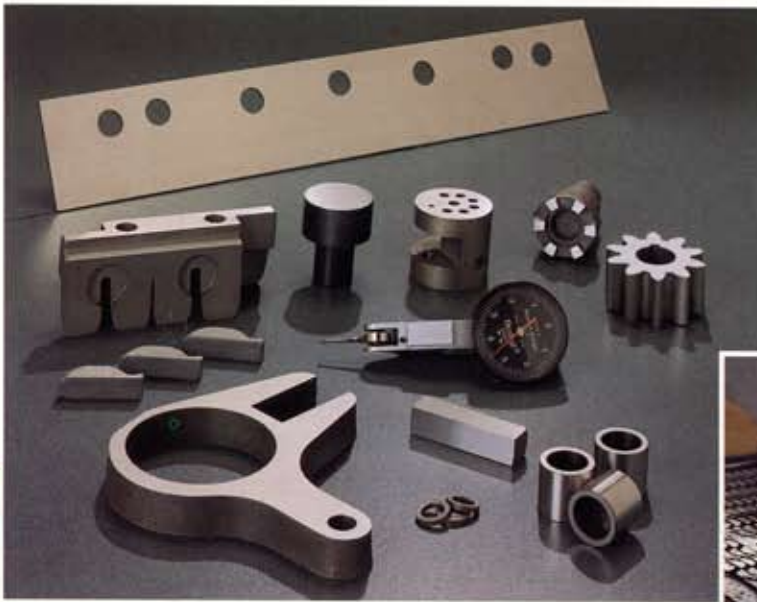
# Call on the "Flatwork Specialists"™

Save Money on Your Stampings, Castings and Machined Parts



## SURFACE GRINDING

Holding precision tolerances on one of Columbia's three surface grinders is every day business. The largest of these grinders is 16" wide x 30" high x 96" long. We also have an "arter" rotary surface grinder which can generate your concave or convex surfaces.



Where toolroom tolerance or special angles are required, Columbia's reciprocating surface grinders are available. These machines are also good on production runs, especially on small or thin pieces (1/4" dia., .013" thick).



## LAPPING

This free abrasive process provides a better, more consistent finish. Tolerances of +/- .00015 can be held on parts up to 18" in diameter. Light bands of flatness are held (one light band equals 11.6 millionth of an inch) on almost any material from steel to plastic, even glass. We have four lapping machines ranging in size from 12" to 48" that can accommodate your scheduling needs.



Call or fax for additional information:

**(414) 762-7320**

**FAX (414) 762-7544**

Your inquiry will be given  
prompt and careful attention.

[sales@columbiagrinding.com](mailto:sales@columbiagrinding.com)



# Columbia Production and Quality Control Systems Assure Consistent Quality Cost Effective Ground Parts.



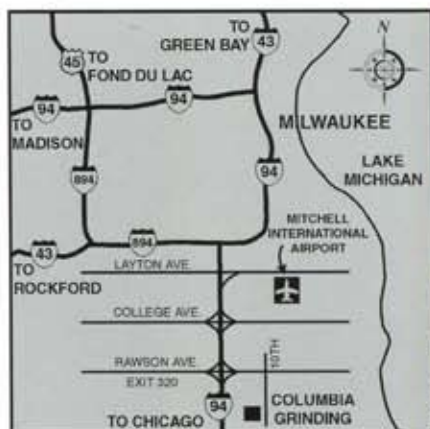
▲ A bank of blanchard grinders in operation at Columbia's new facility. We provide precision cost effective grinding and finishing services for companies throughout the midwest.

## QUALITY ASSURANCE

Our full-time Quality Manager with the GageTalker III data collection system, analytical software assures you of quality finished products everytime. Machine operators are trained in Statistical Process Control and perform their own inspections.



At Columbia Grinding, we provide in-process inspection for each job, no matter what size production run. It is our commitment to assure you that your parts are to the specifications and level of quality that you expect of us.



Interstate highways, railroads and air transportation provide convenient accessibility to Columbia's new 20,000 square foot plant. The facility's state-of-the-art equipment provides a variety of finish grinding services under one roof.



**COLUMBIA GRINDING INC.**  
7411 South 10th Street • Oak Creek, WI 53154  
(414) 762-7320 • Fax (414) 762-7544  
columbiagrinding.com sales@columbiagrinding.com